



**RTI Electronics, Inc.™**

1800 E. Via Burton Street  
Anaheim, CA 92806-1213  
A Wholly Owned Subsidiary of IntriCon Corporation

Phone : 714-765-8200  
Fax: 714-765-8201



**RTIE/Amecon Magnetic's ARCHITECTURAL LIGHTING  
DEBUZZING CHOKES**

P/N	LAMP VOLTAGE	I (Amps)	LOAD (Watts)	Tr (μS)	Vd (Volts)	Tr (°C)	DCR (OHMS)	L (mH)	WIRE GA.	FIG.
101425-119091	12	4.167	50	500	.625	69	.11	1.38	19	1
	120	4.167	500	67	.458	69	.11	1.38	19	1
1328-118100	12	4.167	50	1060	.798	56	.14	1.51	18	2
	120	4.167	500	157	.601	56	.14	1.51	18	2
161859-117120	12	4.167	50	1070	.588	44	.11	1.15	17	3
	120	4.167	500	128	.473	44	.11	1.15	17	3
	12	6.25	75	1070	.972	75	.11	1.15	17	3
	120	6.25	750	134	.719	75	.11	1.15	17	3
161859-118125	12	4.167	50	1100	.732	52	.14	1.25	18	3
	120	4.167	500	134	.597	52	.14	1.25	18	3
1618-118127	12	4.167	50	1250	.828	57	.14	1.56	18	3
	120	4.167	500	156	.617	57	.14	1.56	18	3
162359-117115	12	4.167	50	1300	.669	43	.12	1.33	17	3
	120	4.167	500	154	.514	43	.12	1.33	17	3
	12	6.25	75	1300	1.12	74	.12	1.33	17	3
	120	6.25	750	161	.785	74	.12	1.33	17	3

**EXPLANATION OF THE TERMS**

I = Load current.

TR = Time taken for current to rise from 10% to 90% of its peak value.

This factor and the rate of current rise (slew rate) \* determine the amount of noise reduction in the lamp.

Vd = Voltage drop due to choke. (See circuits 1 and 2)

Tr = Approximate temperature rise. (Convection cooled)

L = Low level inductance  $\frac{+15}{-7.5\%}$

\*Note: For better understanding of debuzzing filter chokes read RTIE/Amecon Magnetic's [A Simple Approach to Understanding Filter Inductor Applications.](#)



**RTI Electronics, Inc.<sup>TM</sup>**

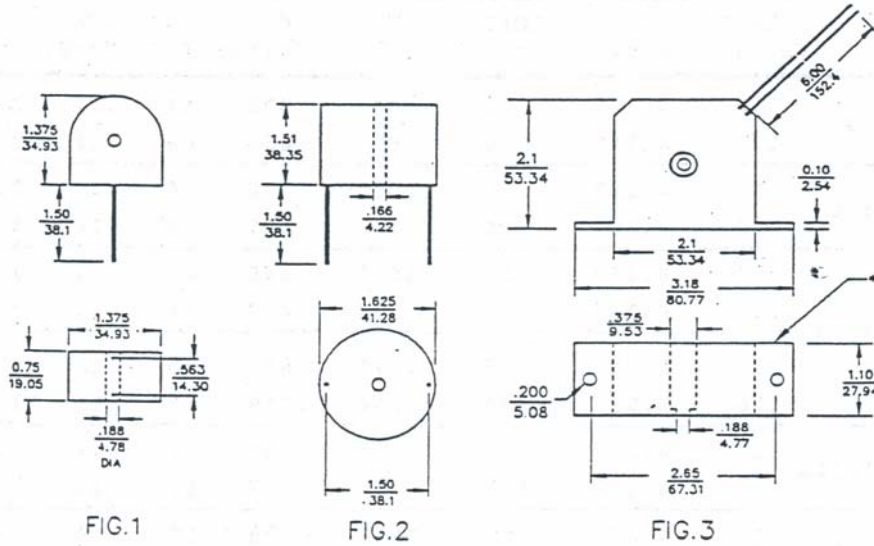
1800 E. Via Burton Street  
Anaheim, CA 92806-1213  
A Wholly Owned Subsidiary of IntriCon Corporation

Phone : 714-765-8200  
Fax: 714-765-8201

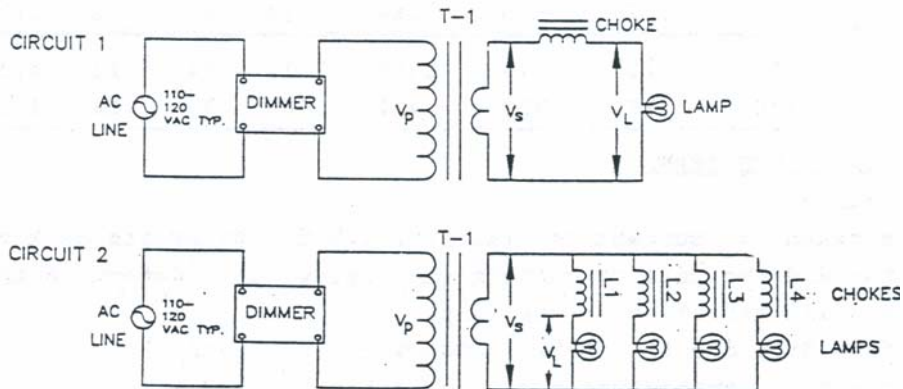


**MECHANICAL DRAWING**

DIM: INCHES  
mm



TYPICAL DIMMER CIRCUITS FOR SINGLE & MULTI-LAMP LOADS.



**TERMINOLOGY:**

- Vp = Primary side of transformer T-1
- Vs = Secondary (Low voltage side) of transformer T-1
- VL = Voltage seen at the load (Lamps)
- Vd = Voltage drop due to choke (Vd = Vs - VL)
- L1.L2.L3.L4,etc. + Debuzzing chokes. May or may not be the same type. \*\*
- \*Foot mounting may be cut off at factory or in the field and the center mounting hole be used only.