

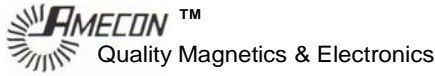


RTI Electronics, Inc.™

1800 E. Via Burton Street
Anaheim, CA 92806-1213

Phone : 714-765-8200
Fax: 714-765-8201

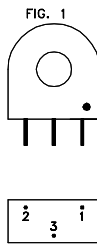
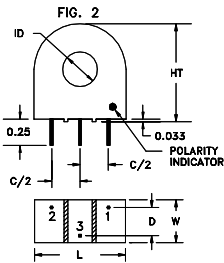
A Wholly Owned Subsidiary of IntriCon Corporation



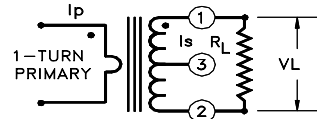
THE NEW SUPER ECONOMY SERIES OF CURRENT TRANSFORMERS

- UNIT TO UNIT PERFORMANCE REPEATABILITY BETTER THAN $\pm 1\%$
- FREQUENCY RESPONSE: 45Hz TO 30kHz. (Except 5314A and 5315A)

P/N	Ratio	VL	Ip	V/A	RL		Rs	RCF	Ie(μ A)	Vex	Wt.	POTTED DIMENSIONS						FIG.
					OHM	WATT						L	ID(MIN)	HT	W	C	D	
5302A	666:1	2.00	10	0.20	133	0.030	20.4	1.019	1365	2.30	0.028	0.990	0.370	0.990	0.470	0.600	0.300	2
5303A	666:1	1.50	15	0.10	66.5	0.034	21.0	1.010	1139	1.97	0.028	0.990	0.370	0.990	0.470	0.600	0.300	2
5304A	666:1	2.00	20	0.10	66.5	0.060	21.0	1.009	1434	2.63	0.028	0.990	0.370	0.990	0.470	0.600	0.300	2
5305A	666:1	2.50	25	0.10	66.5	0.094	21.9	1.008	1325	3.32	0.050	1.188	0.460	1.188	0.560	0.800	0.400	2
5306A	666:1	3.00	30	0.10	66.5	0.135	21.9	1.007	1545	3.98	0.050	1.188	0.460	1.188	0.560	0.800	0.400	2
5307A	666:1	4.00	40	0.10	66.5	0.240	23.8	1.007	1765	5.42	0.081	1.375	0.625	1.375	0.560	1.000	0.400	1
5308A	666:1	5.00	50	0.10	66.5	0.375	23.8	1.006	2101	6.78	0.081	1.375	0.625	1.375	0.560	1.000	0.400	1
5309A	666:1	3.00	60	0.05	33.2	0.269	23.9	1.004	1897	5.14	0.091	1.500	0.688	1.500	0.560	1.200	0.400	1
5310A	666:1	3.75	75	0.05	33.2	0.421	23.9	1.003	2273	6.43	0.091	1.500	0.688	1.500	0.560	1.200	0.400	1
5311A	666:1	5.00	100	0.05	33.2	0.748	10.0	1.004	2543	6.48	0.116	1.750	0.750	1.750	0.560	1.400	0.400	1
5312A	666:1	3.75	150	0.025	16.5	0.837	5.6	0.994	2642	4.97	0.152	2.188	0.938	2.188	0.810	1.800	0.500	1
5313A	666:1	3.00	200	0.015	10	0.902	5.6	1.002	2468	4.70	0.152	2.188	0.938	2.188	0.810	1.800	0.500	1
5314A	1333:1	3.00	400	0.0075	10	0.900	9.5	1.002	1832	5.84	0.179	2.380	1.380	2.380	0.813	2.000	0.400	1
5315A	2666:1	3.00	800	0.00375	10	0.900	21.5	1.000	763	9.45	0.283	2.380	1.380	2.380	0.813	2.000	0.400	1

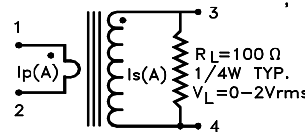
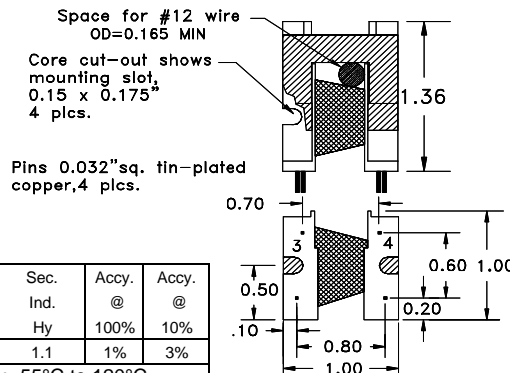
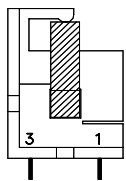


- * Ip: Primary Current
- * V/A: Output Volts per Input Amps
- * RL: Terminating Resistor.
- * Rs: Winding Resistance
- * Iex: Excitation Current.
- * Vex: Excitation Voltage
- * WT.: Net Weight in Pounds.
- * Unless requested, the terminating resistor and the one-turn primary are not supplied.
- * Pin 3: Normally for mechanical support only, will be used for center-tapped designs.



SNAP-ON LOAD DETECTOR LD-50

This new revolutionary snap-on load detector mounts on pre-wired systems without disrupting existing connections.



The terminating resistor and the one-turn primary are not supplied.

VL	RL	Is	Sec. DCR	Sec. Ind.	Accy. @	Accy. @
Volts	Ohms	Amps	Ohms	Hy	100%	10%
2.0	100	0.02	36	1.1	1%	3%

Operating Temperature: -55°C to 120°C