



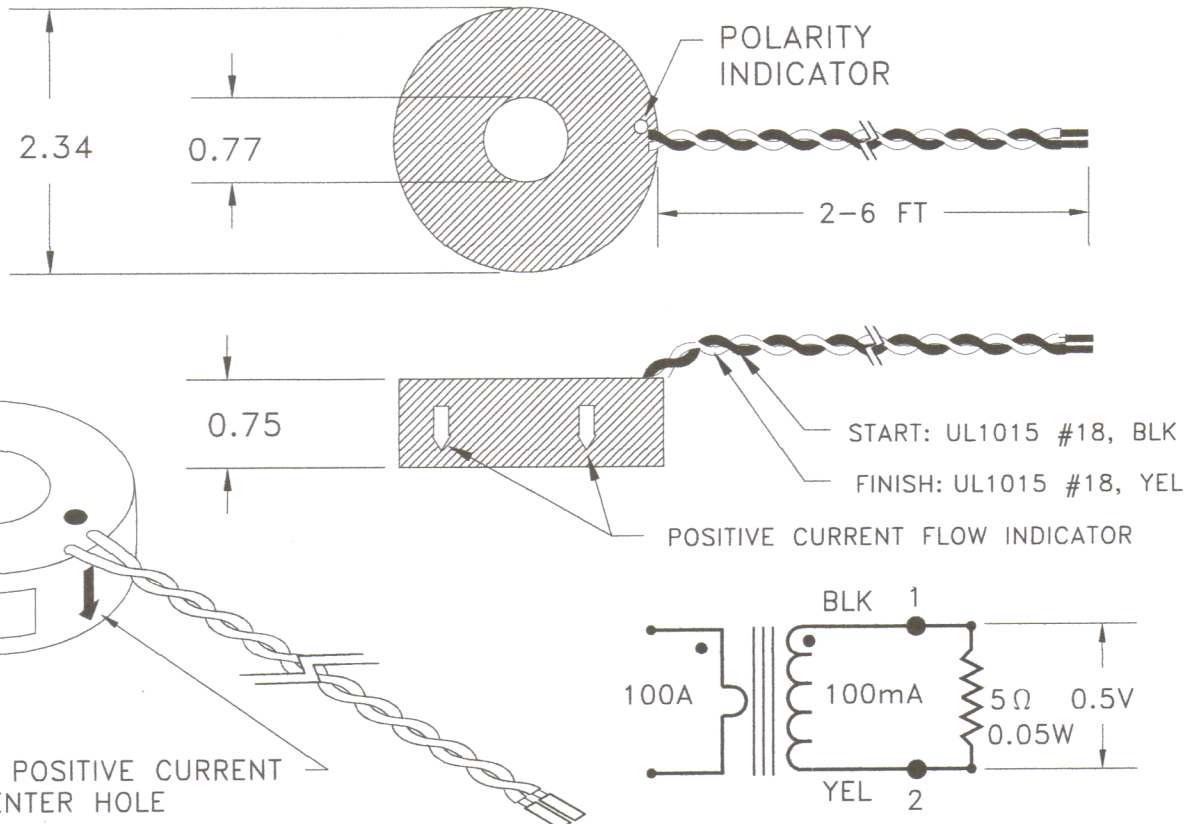
# 100A CURRENT TRANSFORMER, P/N 5383

- \* LOW PHASE SHIFT
- \* LOW PRICE
- \* REPEATABLE PERFORMANCE
- \* WIDE OPERATING TEMP. RANGE
- \* OPTIONS INCLUDE OVER-VOLTAGE PROTECTION.
- \* LIGHT WEIGHT.

ELECTRICAL SPECIFICATIONS	
PRIMARY CURRENT:	100 A NOM., 300A MAX.
URNS RATIO:	1000:1
VOLT PER AMP RATIO AT 100A, FOR 5 OHM LOAD: :	0.00500 V/A
VOLT PER AMP RATIO AT 10A, FOR 5 OHM LOAD :	0.00499 V/A
PHASE SHIFT AT 100A, FOR 5 OHM LOAD:	5.9 MINUTES
PHASE SHIFT AT 10A, FOR 5 OHM LOAD:	21.5 MINUTES
D.C.RESISTANCE AT 20°C:	11 OHMS
TEMP. RISE AT 300A CONTINUOUS:	20°C
DIELECTRIC WITHSTANDING VOLTAGE (HI-POT):	4kV RMS.

MECHANICAL SPECIFICATIONS	
PARAMETER	AMECON, PART NUMBER, DATECODE, DOT AT START PIN.
MARKING	AMECON, PART NUMBER, DATECODE, DOT AT START PIN.
APPROX. WEIGHT	0.22 LB.
TOLERANCES:	.X: ±0.1    .XX: ±0.03    .XXX: ±0.01

ENVIRONMENTAL SPECIFICATION	
STORAGE TEMP.	-55°C < Tc < +130°C
OPERATING TEMP.	-55°C < Tc < +125°C



NOTE: THE ONE-TURN PRIMARY AND THE TERMINATING RESISTOR ARE NOT SUPPLIED.